

HMD

Bolt-on Fuse

UL US
E356490

RoHS

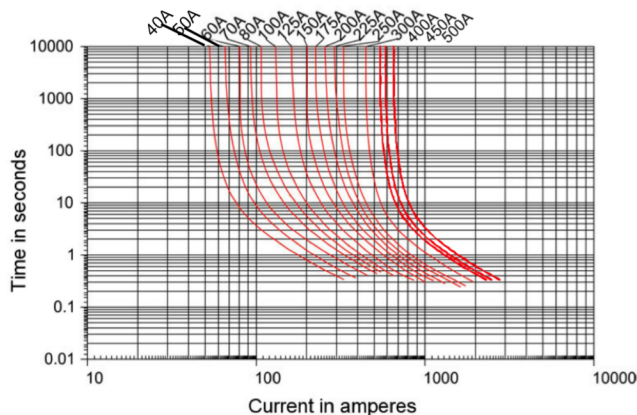


Rated Current	Nominal Melting I ² t A ² Sec	Voltage Rating (V)	Wire mm ²	T
40A	4116	70V DC	6	1.2±0.05
50A	7320		6	
60A	10150		6	
70A	24600		6	
80A	46020		10	
100A	24200		10	1.0±0.05
125A	41500		16	
150A	71400		25	
175A	113400		25	
200A	193050		35	
225A	248800	35	1.2±0.05	
250A	251000	50		
300A	304000	50		
350A	586000	50		
400A	947000	70		
450A	1231400	70		
500A	1680100	70		

Electrical Characteristic

% of Ampere Rating	60~250A		300~500A	
	MIN	MAX	MIN	MAX
75%	---	---	14400	---
	sec	sec	sec	sec
100%	14400	---	---	---
	sec	sec	sec	sec
135%	120	1800	---	---
	sec	sec	sec	sec
150%	20	450	---	---
	sec	sec	sec	sec
200%	1	15	1	15
	sec	sec	sec	sec
350%	0.3	5	0.5	5
	sec	sec	sec	sec
600%	0.1	1	---	---
	sec	sec	sec	sec

Average Time Current Curves



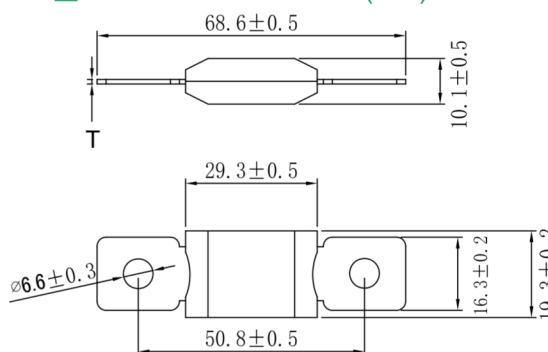
Installation Instructions

Install the plain washers first, then the elastic washers, and finally the M6 nut. The torque of the nut is 8-14 N.m.

Interrupting Rating

Interrupting Rating: 2500A @70V DC

Mechanical Dimension(mm)



Physical Specification

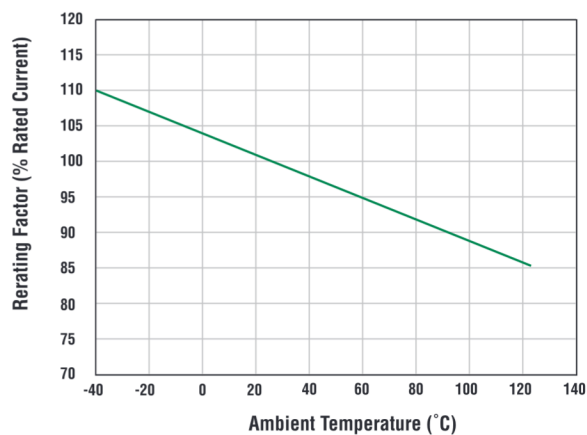
Housing Material: LCP,UL 94V-0 Thermoset Plastic.
Color: Black.
Terminals: Cupronickel/Copper Tin Plated.
Packaging: 42pcs/bag,756pcs/Box

Environmental Specification

Operating Temperature -40°C to +125°C

Temperature Derating Curve

Fuse Temperature Derating Curve



Part Numbering System

HMD XXXA 70VDC
Type Rating Current Rating Volt